

Product Image



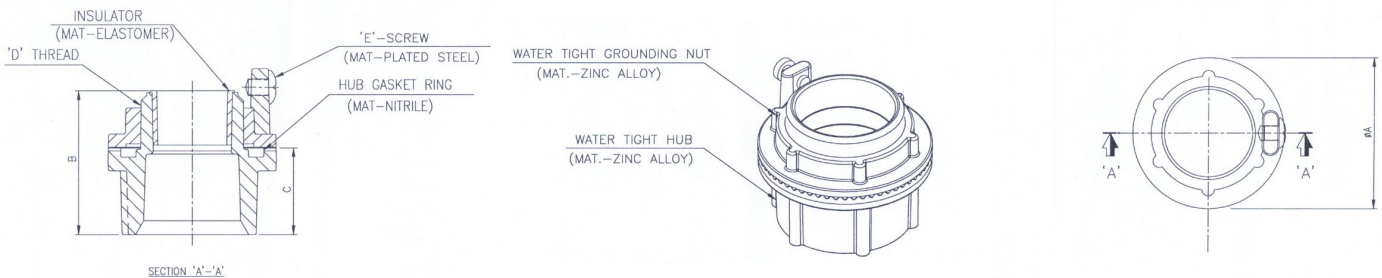
Weathertight Hubs

Weathertight hubs with grounding lugs are used to connect rigid conduit or IMC to a metal enclosure. They are manufactured with a non-corrosive zinc alloy hub that is suitable for indoor or outdoor use. They are rated water tight and seal tightly to protect the conduit from moisture, oil and dust.

Features:

- UL listed
- Die cast from high strength zinc alloy
- Sealing ring
- 105° rated throat insulator

Performance Data



PN#	'ØA' (mm)	'B' (mm)	'C' (mm)	'D' NPSM Thread	'E' Screw Size
WTHGL50	36.50	40.10	21.00	1/2"	No.10 x 17/64"
WTHGL75	43.00	40.40	22.40	3/4"	No.10 x 17/64"
WTHGL100	50.70	47.60	25.30	1"	No.25 x 3/8"
WTHGL125	60.23	49.70	28.50	1-1/4"	No.25 x 3/8"
WTHGL150	69.78	50.60	28.50	1-1/2"	No.25 x 3/8"
WTHGL200	82.55	50.10	28.30	2"	No.25 x 3/8"
WTHGL250	96.00	68.20	39.70	2-1/2"	No.25 x 3/8"
WTHGL300	111.25	68.40	39.70	3"	No.25 x 3/8"
WTHGL350	126.10	67.30	39.70	3-1/2"	No.25 x 3/8"
WTHGL400	138.80	67.80	41.40	4"	No.25 x 3/8"